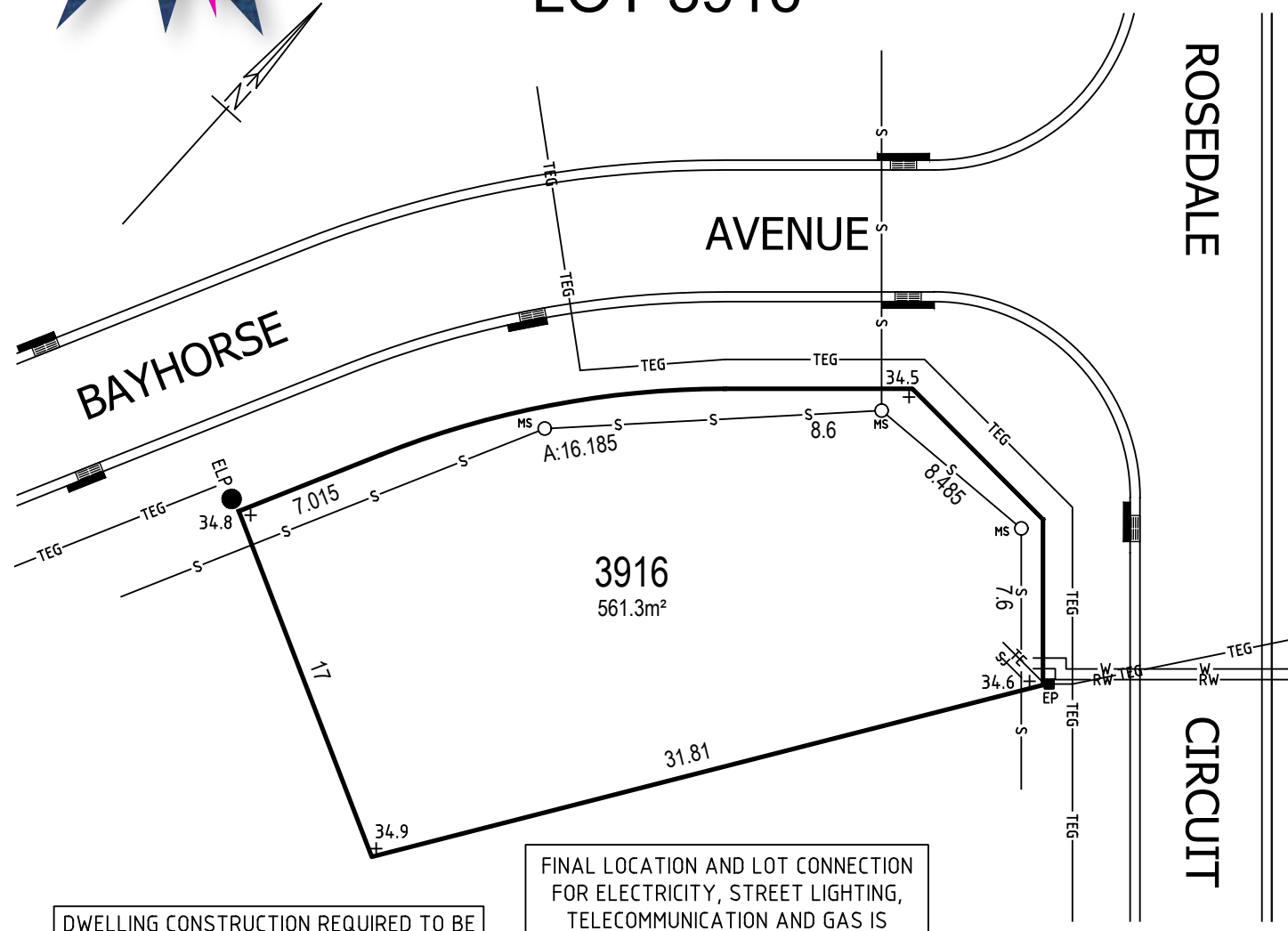


# LOT PLAN



## LOT 3916

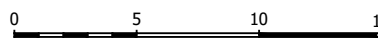


DWELLING CONSTRUCTION REQUIRED TO BE IN ACCORDANCE WITH 'CONSTRUCTION OF BUILDINGS IN BUSHFIRE-PRONE AREAS'

FINAL LOCATION AND LOT CONNECTION FOR ELECTRICITY, STREET LIGHTING, TELECOMMUNICATION AND GAS IS SUBJECT TO CERTIFICATION FROM RELEVANT AUTHORITY. GAS SERVICE IS NOT CONNECTED TO LOT

**LEGEND**

- TEG— ELECTRICITY, TELECOMMUNICATIONS AND GAS    ● ELP LIGHT POLE
- TE— ELECTRICITY, TELECOMMUNICATIONS            ■ EP ELECTRICITY PILLAR
- S— SEWER    ○ SAC ACCESS CHAMBER    ○ MS MAINTENANCE SHAFT    ⚡ SEWER JUNCTION
- W— WATER
- RW— RECYCLED WATER
- SW— STORMWATER            ■ STORMWATER LINTEL & GRATE
- 4.7— CONTOUR



**1300 373 683**  
**freemansridge.com.au**

The material herein is intended as a guide only, no liability for negligence or otherwise is assumed for the material contained herein by Ingham Property Development, its principal or its servants or its agents. No material contained herein shall form the basis of or be part of any agreement and no warranty is given or implied as to the accuracy of the whole or any part of the material. Prospective buyers should not rely on the material but should make their own enquiries and satisfy themselves of all aspects of the material. Any liability by Ingham Property Development, its servants or its agents in any way connected with the brochure, whether or not such liability results from or involves negligence, will not exceed \$1000. INGH0118B MMD0030720